

# INTERIOR DESIGN<sup>®</sup>

MAY 31  
2011



market tabloid  
**everybody gather round**

# seating

Designed by architects Patrick de Louwere and Bart Eijking, *Wonky* appears, at first glance, to be an ordinary side chair.

## **Studio Lawrence**

But closer inspection reveals that the spray-painted oak-veneer seats are cut asymmetrically into five subtly distinct shapes; made in black or white, they can be set against steel frames powder-coated black or white, creating 20 variations in all. Wool felt cushions are available, as are custom colors. 44-20-83542667; [studiolawrence.com](http://studiolawrence.com).

circle 301 ➤





1



8



7



6



5



4



2

Collaboration never felt so cozy

## conversation pieces

1. Lightning bench in translucent resin with sensor-activated LEDs by **Nuno Erin**, **circle 303**
2. Freeflow six-piece seating with polyurethane foam, polyester filling, hardwood backing, and aluminum feet by **Moroso**, **circle 304**
3. Composite sofa with 10 1/2-inch-high white lacquer platform by **Lepere**, **circle 305**
4. Ladybug-Dream corner sofa in beech with Kvadrat's Divina Melange wool by **Brühl & Sippold**, **circle 306**
5. Pearson Lloyd's Stone modular seating with chrome base and wool upholstery by **Property**, **circle 307**
6. To Gather modular seating system upholstered in Kvadrat wool by **Studio Lawrence**, **circle 308**
7. Happen sofas with solid pine frame and solid beech feet in wenge finish and cotton-covered seat cushions by **Sanca! Diseño**, **circle 309**
8. Drift Island seats and tables with wadding outerlayers and foam-molded seats by **Walter Knoll**, **circle 310** ➔

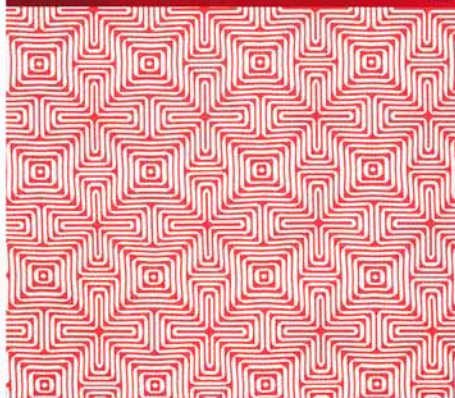


3

seating



1



7



2



4



3

## pattern patrol

Assertive graphics keep color in line

1. C'est Chic vinyl wall covering by **Dedar**, circle 377
2. Black Mambo linen and cotton by **Jennifer Shorto**, circle 378
3. Pony stools covered in Hot Still-Scape linen and cotton by **Jennifer Shorto**, circle 379
4. Bamboozle rayon and ramie by **Jim Thompson**, circle 380
5. Along These Lines wall hanging in wool felt with steel rail and stainless-steel bolts by **Studio Lawrence**, circle 381
6. NeoGeo cotton and polyester by **Unika Vaev**, circle 382
7. Trina Turk's Amazing Maze indoor-outdoor acrylic fabric by **F. Schumacher & Co.**, circle 383 ➤



6



5